

Interstate 17 Black Canyon Freeway I-10 Maricopa TI to Loop 101

Corridor Improvement Study/ Environmental Impact Statement

February 9, 11, and 18, 2010
Public Scoping Meetings



Speakers

- **Julian Avila**
Community Relations Project Manager
- **Steve Beasley**
Project Manager



Agenda

- **Regional Transportation Plan Overview**
- **Project Overview**
- **Question and answer**

Please write your questions on the comment cards



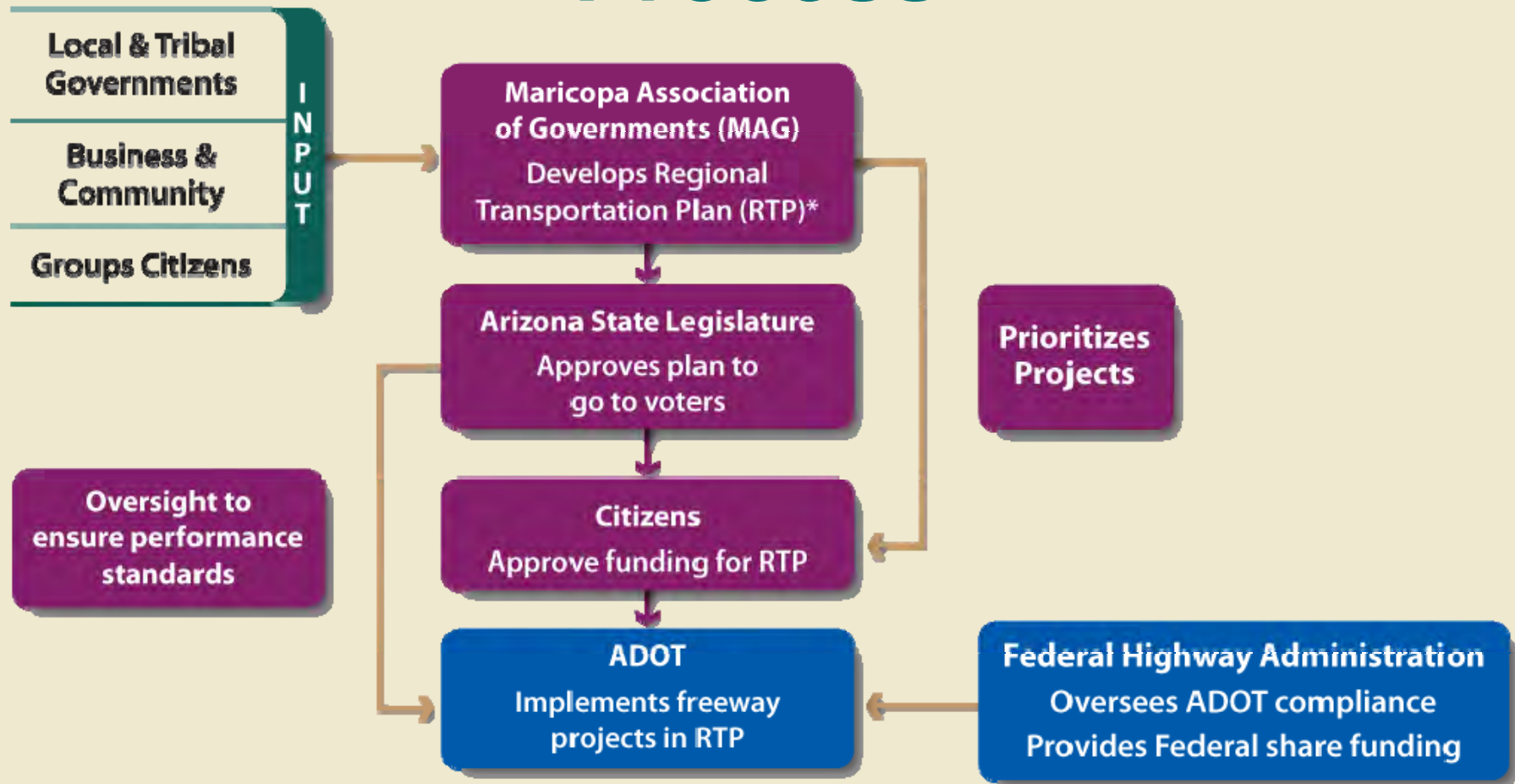
What is the Regional Transportation Plan (RTP)?

The RTP is a partnership between Arizona Department of Transportation (ADOT), Maricopa Association of Governments (MAG), local cities, Valley Metro and Valley Metro Rail to:

- Manage regional transportation programs
- Coordinate project implementation
- Develop finance strategies
- Foster communication and public involvement
- Facilitate regional collaboration on transportation initiatives



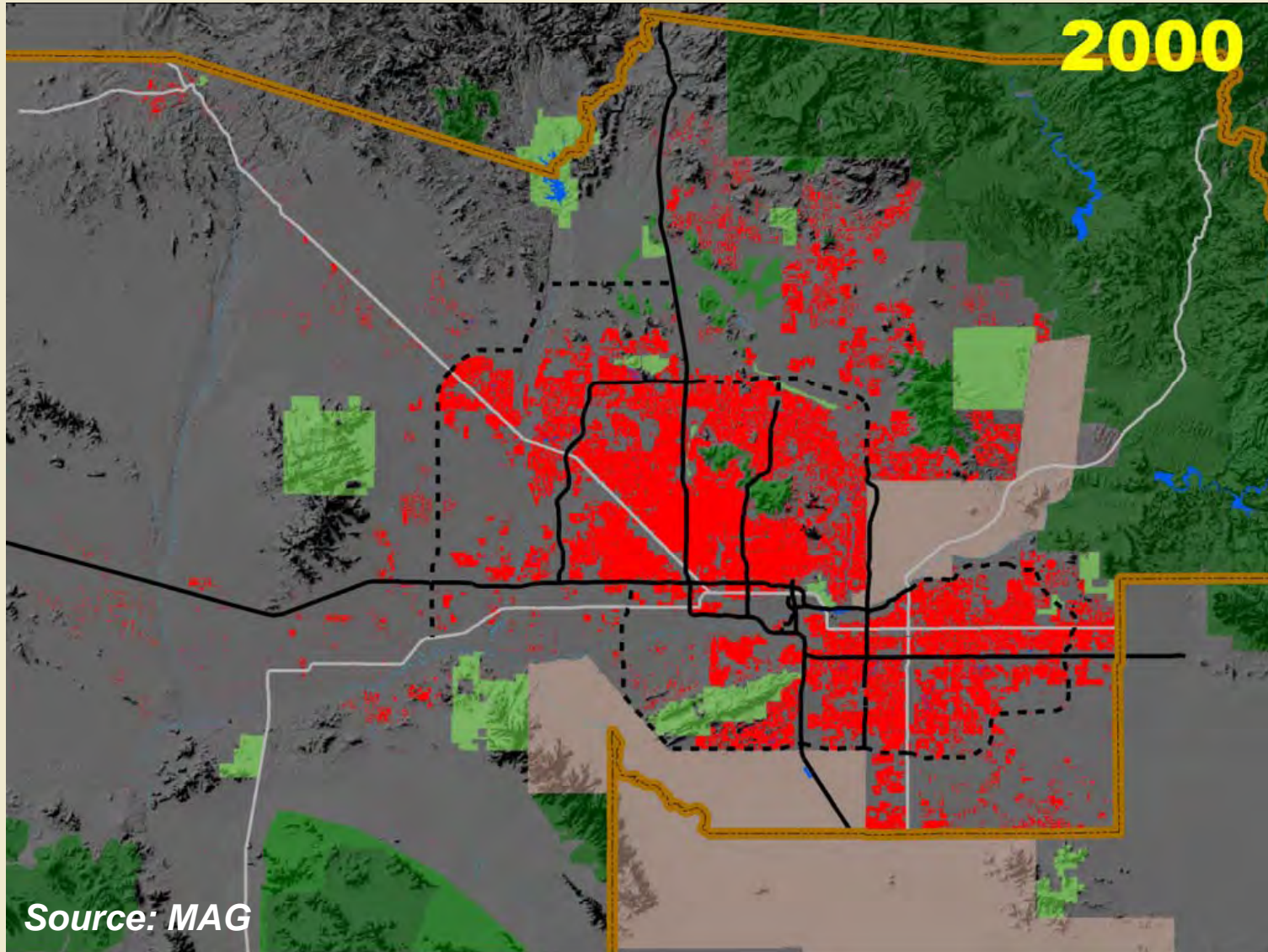
Regional Transportation Planning Process



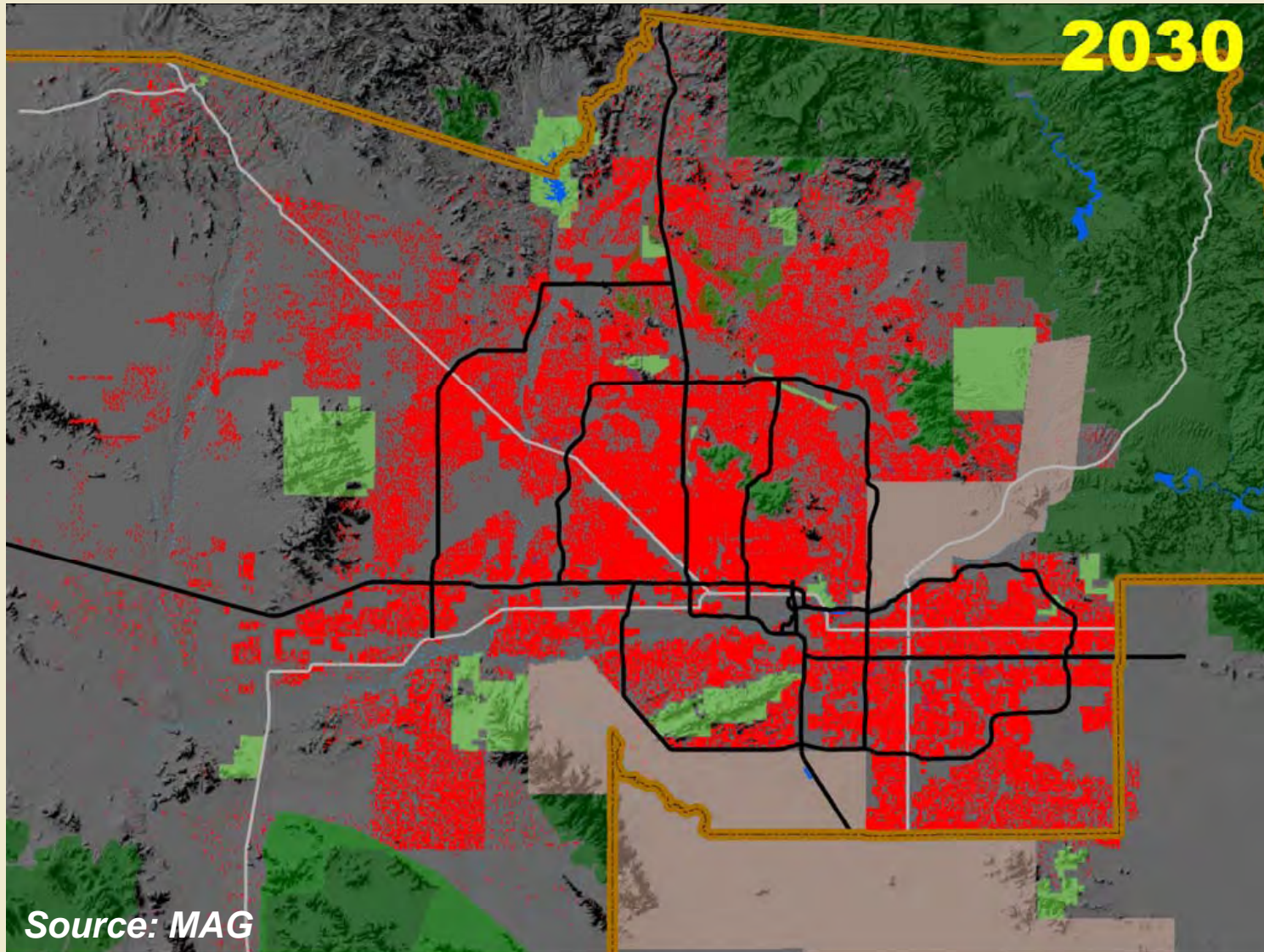
* Maricopa County Voters approved current RTP in November 2004



Regional Population Growth



Regional Population Growth



Source: MAG



Maricopa Association of Government's Role: *Planning*

- Regional transportation planning
- Set priorities for phasing and funding of projects
- Approval of accelerations and cost changes to RTP
- Approval of air quality analyses on all regional transportation projects



Arizona Department of Transportation's Role: *Implementation*

- Implement RTP Freeway Program
- Conduct studies to identify and evaluate alternatives
- Coordinate environmental document
- Acquire right-of-way
- Design, construct and maintain freeway system



Federal Highway Administration's Role: *Oversight*

- Provide federal highway funds
- Serve as lead federal agency
- Participate in study process
- Provide document review and decision
- Provide engineering and environmental document review and approval
- National Environmental Policy Act (NEPA)



Public's Role

- **Ask questions**
- **Provide feedback**
- **Participate in project development**
- **Participate in public involvement**
- **Inform us**
 - What is important to you?
 - What are your concerns?



Public Involvement Approach

- **Clear, consistent, and inclusive communication with the public through planning, design, and construction**
- **Seek input from individuals, community leaders and elected officials**
- **Work with local community-based organizations, neighborhoods and businesses**
- **Utilize existing communication tools**



Purpose of Scoping

- Invite agency and public participation via the NEPA process
- Identify affected public and agency concerns
- Identify issues that need attention during the study and additional studies that should be conducted
- Define a timeframe for completion of the study



How We Build Freeways



Learn more about the Regional Transportation Plan www.LetsKeepMoving.Com

Let's Keep Moving - Windows Internet Explorer
http://www.letskeepmoving.com/

File Edit View Favorites Tools Help
Google Go Bookmarks 35 blocked Check AutoLink Settings

Let's Keep Moving

REGIONAL TRANSPORTATION PLAN
MARICOPA ASSOCIATION OF GOVERNMENTS

Transportation Policy Committee MAG Regional Transportation Plan Public Outreach Activities

Final Regional Transportation Plan Approved

The [Maricopa Association of Governments](#)—working with local communities, state and regional agencies, business leaders, and the public—has developed the new Regional Transportation Plan that will guide transportation investments for the next 20 years. Technical studies conducted across the region, along with extensive public outreach and support from the business community, have all contributed to building a transportation plan that is designed to balance various needs throughout the region while meeting performance-based standards.

The Plan was approved by the Transportation Policy Committee and Regional Council, and has also passed required air quality standards. The [full Plan](#) and [executive summary](#) are available online.

See the [News Updates](#) page for more press releases, and the [Public Outreach Activities Project](#) page for an up-to-date calendar and the latest related documents.

What's New

- ▶ [2007 RTP Update](#)
- ▶ [2006 RTP Update](#)
- ▶ [2005 RTP Phasing Maps](#)
- ▶ [April 2006 Transportation News Update](#)

Downloads

- ▶ [Regional Transportation Plan](#)
- ▶ [Regional Transportation Plan Executive Summary](#)
- ▶ [Freeways and Arterials Map](#)
- ▶ [Regional Bus System Map](#)
- ▶ [Bus Rapid Transit and Light Rail Transit Map](#)
- ▶ [RTP PowerPoint Presentation](#)
- ▶ [Single Page RTP Summary Flier](#)
- ▶ [Subarea Fact Sheets of Transportation Improvements](#)

DID YOU KNOW?

Nationally, the average number of cars and trucks traveling on freeways (per-lane), total miles traveled, and average speed of those vehicles has been increasing in recent years. In spite of that, between 1970 and 1998, the number of annual highway fatalities declined from 53,000

Download Final RTP

MAGAZine
SPECIAL EDITION

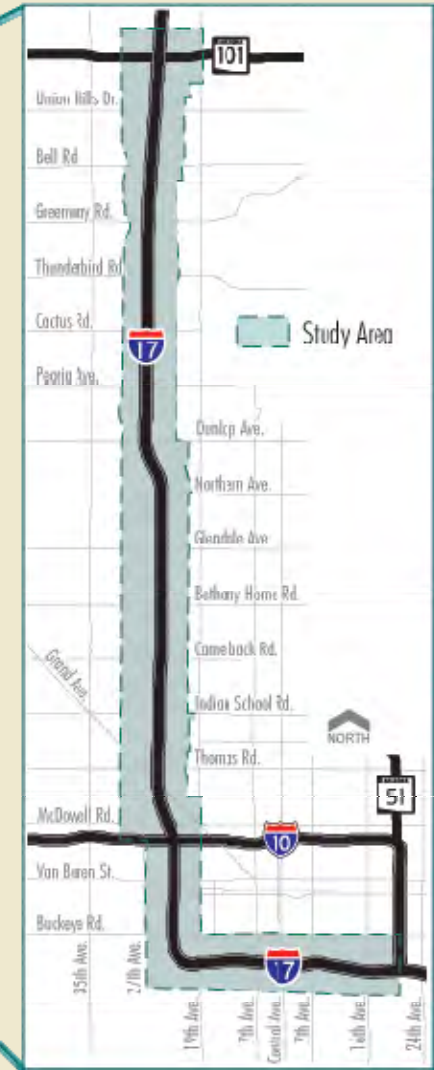
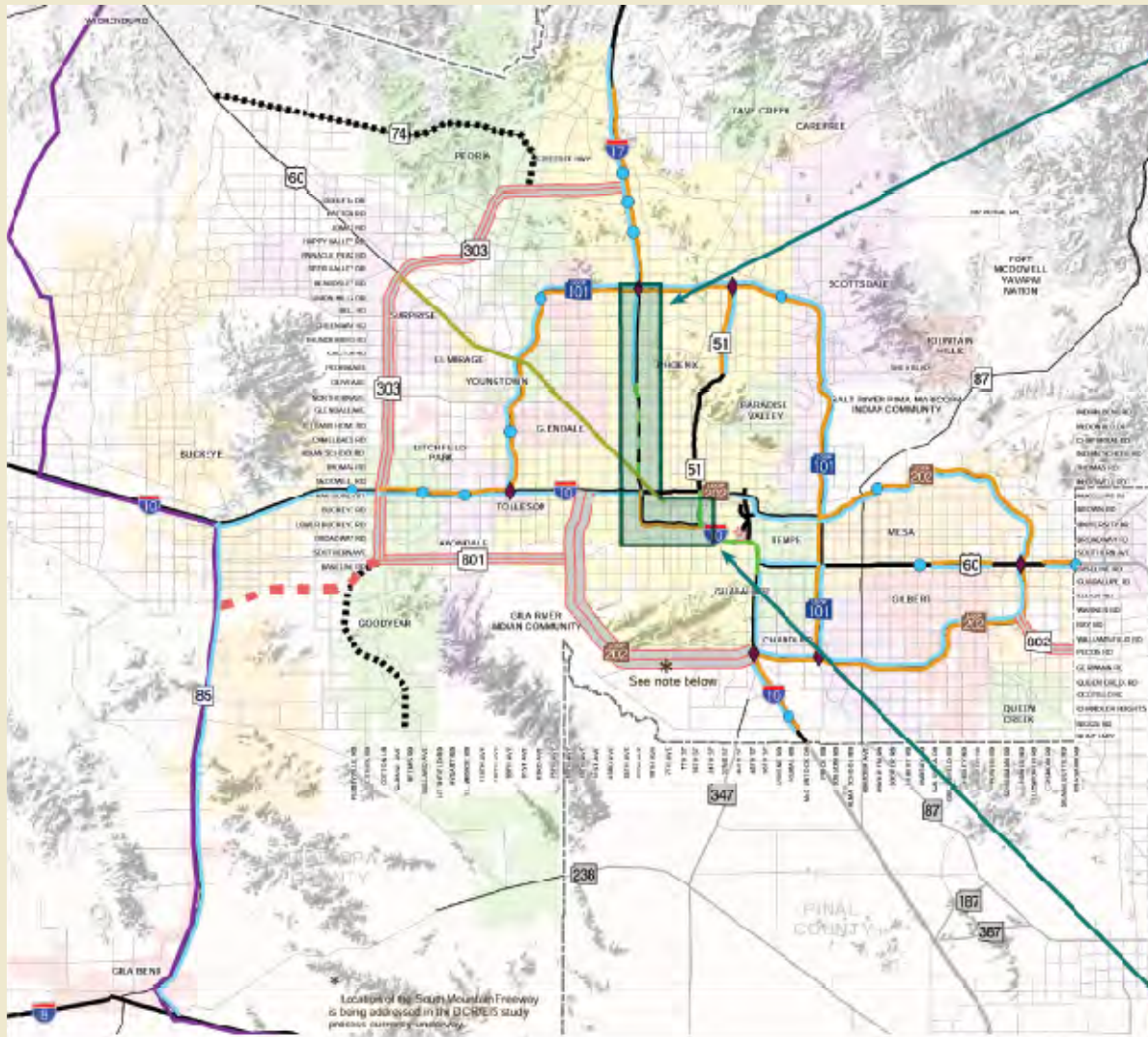
Internet 100%



Project Overview

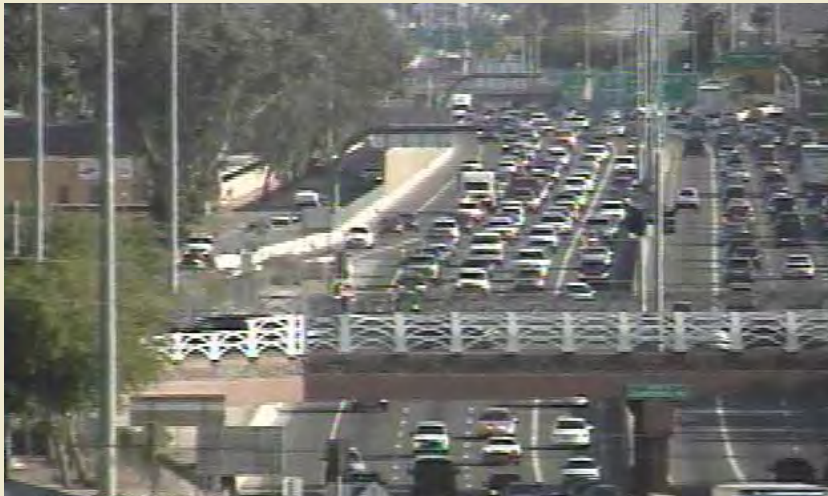


Study Area



Study Need

- Current and future traffic demands exceed existing roadway capacity
- I-17 freeway is over 50 years old and needs major renovation



Study Purpose

- **Identify/evaluate alternatives to improve traffic operations**
- **Develop solutions to reduce the hours of delay and congestion**

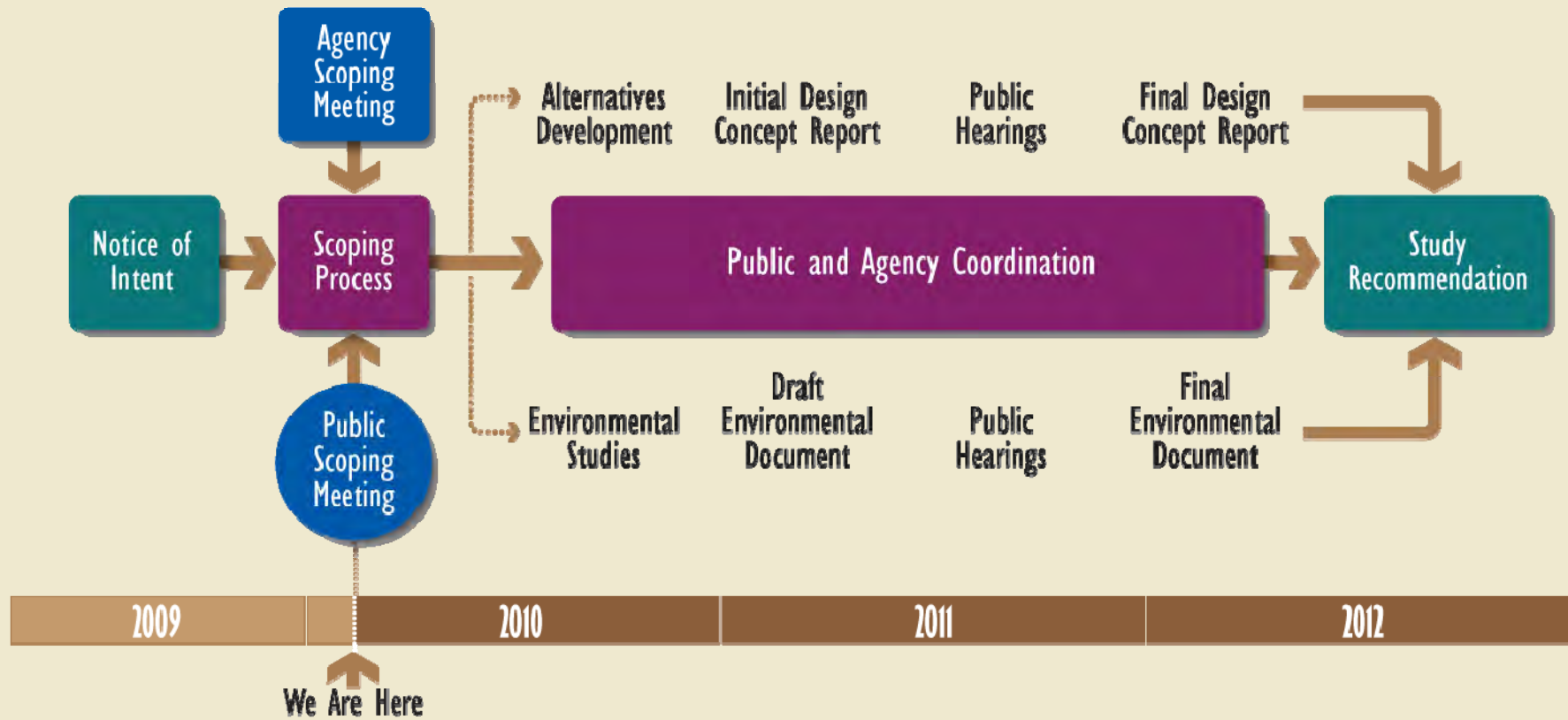


Focus of Study

- **Environmental and Engineering elements**
- **Improvement Alternatives**
- **No Build Alternative**
- **Design Concept Report (DCR) and Environmental Impact Statement (EIS)**



Study Schedule and Project Milestones



Engineering Elements

- Traffic
- Roadway Facility and Constraints
- Frontage Roads
- Multimodal Facilities/Services
- Drainage
- Utilities
- Constructability
- Right of Way
- Costs
- Implementation Plan



Environmental Elements

- Air Quality
- Biological Resources
- Cultural Resources
- Environmental Justice
- Hazardous Materials
- Land Use
- Neighborhood Considerations
- Noise
- Section 4(f) Properties
- Secondary and Cumulative Impacts
- Socioeconomic Considerations
- Visual Resources
- Water Resources



Public Input

- **Inform us**
 - What is important to you?
 - What are your concerns?
- **Submit your comments by March 22, 2010**



We want to hear from you!

- **Submit the comment form today**

- **Mail to:**

ADOT I-17 CIS/EIS

Attn: Julian Avila, ADOT CCP Project Manager

101 N. 1st Ave, Suite 1900

Phoenix, AZ 85003

- **E-Mail:** ADOT@hdrinc.com
- **Phone:** 602-787-3927
- **Fax:** 602-385-1620
- **Web Site:** www.ValleyFreeways.com

